

DALI PHANTOM K-60

PREMIUM IN-CEILING
Hi-Fi LOUDSPEAKER

Enhance your sound with the DALI PHANTOM K-60 in-ceiling speaker. This speaker features a 6½ inch woofer and a 28mm soft dome tweeter that can be adjusted for optimal sound, ensuring a superior listening experience.

INCREDIBLE SOUND QUALITY

The K series features paper and wood fibre cones for the bass/midrange drivers, mounted in a low loss rubber surround for longer excursion and better low end response, and the cone surface is treated to withstand moisture. The bass drivers are mounted slightly off axis to reduce edge diffractions and improve the frequency response. The tweeter is an 28mm soft dome, chosen for its excellent transient response, low coloration and high sensitivity. The tweeter is mounted in a resonance free, solid aluminium "wishbone" structure, which also allows for pivoting the tweeter unit to the desired angle.

EASY INSTALLATION

The dogleg mounting system allows for easy one-step installation. Simply insert the speaker into the mounting area and tighten the dedicated screws to swing out the dogleg brackets and secure them to the back of the surface. The compass positioning system makes it easy to place the speaker for optimal sound.

DISCREET DESIGN

The K series comes with a slim, discreet front grille in true white (black grille available as accessory). The grille can also be used on PHANTOM E series speakers, allowing for a coherent look when both series are used in the same installation.

BACK CANS AVAILABLE

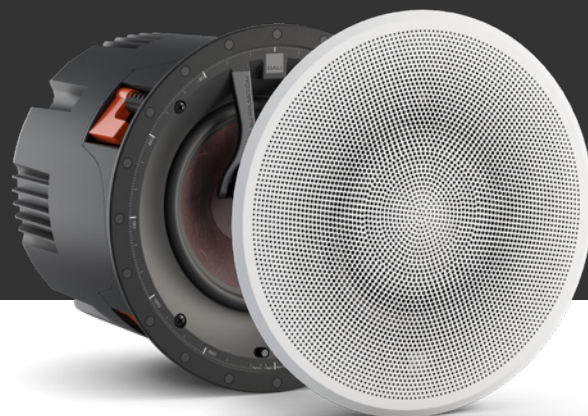
Back cans are available as an accessory for the K-60 and K-80 speakers, providing a retrofit solution for installations where a backbox is not possible. These back cans offer punchier, upper bass-focused sound which can be useful in areas with long reverberation, such as bathrooms or hallways. They are easy to install and have been designed specifically to work with the K series for excellent performance.



DALI

IN ADMIRATION OF MUSIC

TECHNICAL SPECIFICATIONS



See the full DALI PHANTOM range on dali-speakers.com

DALI PHANTOM	K-60
Frequency range	51 - 25,000 Hz \pm 3 dB
Sensitivity	87 dB @ 1 m for 2.83 V
Nominal impedance	6 ohm
Maximum SPL	105 dB
Crossover frequency	3,000 Hz
Crossover principle	2-way
Recommended amplifier power	40 - 150 W
High frequency driver	1 x 28 mm dome
High frequency diaphragm	Soft woven fabric
Low frequency driver / Mid-range driver	1 x 6½ inch
Low/Mid frequency diaphragm	Wood fibre cone
Connection input	Single wire
Enclosure type	Open back
Other features	Normal / High+, Normal / Mid+ Tilttable (pivoting) tweeter
Installation location	In-ceiling / In-wall
Recommended placement	Ceiling / Front / Centre / Surround
Outer dimensions incl. grille (H x W x D)	Ø 265 x 110 mm / Ø 10.4 x 4.33 inches
Outer dimensions excl. grille (H x W x D)	Ø 242 x 106 mm / Ø 9.5 x 4.2 inches
Cut-out dimensions (H x W)	Ø 223 mm / Ø 8.8 inches
Mounting depth	100 mm / 4 inches
Recommended rear volume (backbox)	5 - 50 litres
Optimum rear volume	15 litres
Ceiling/wall thickness	9 - 45 mm / 0.5 - 1.77 inches
Ceiling/wall thickness (Reversed doglegs)	29 - 65 mm / 1.14 - 2.55 inches
Weight	2.0 kg / 4.41 lb
Shipping weight	2.97 kg / 6.55 lb
Finish	White
Accessories	Manual, Cut-out template, Front grille
Optional accessories	K series grille (black), E series grille (round or square), K-60 Back can (retrofit), Universal 25L backbox, Pre-construction Kit

All technical specifications are subject to change without notice.